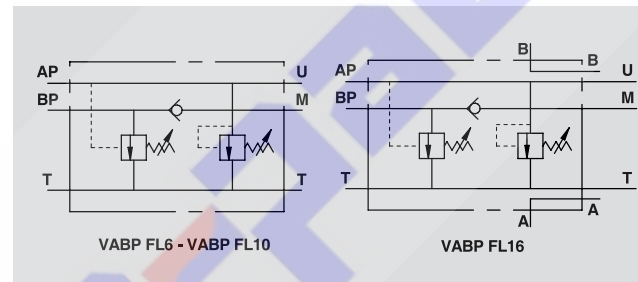
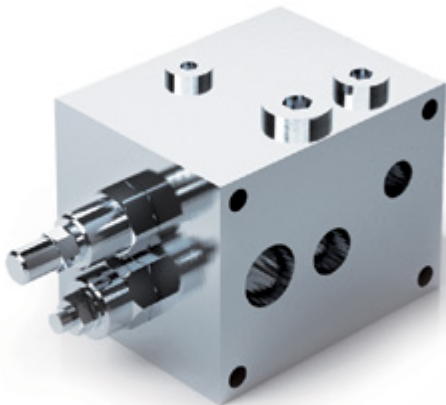


# VALVOLE DI ESCLUSIONE ALTA-BASSA PRESSIONE FLANGIABILI PER PIASTRA NG6-NG10 E NG16

## TWO PUMP "HI-LOW" UNLOADING VALVES FLANGEABLE (BASE NG6-NG10 AND NG16)

TIPO / TYPE  
**VABP FL**

SCHEMA IDRAULICO  
HYDRAULIC DIAGRAM



### IMPIEGO:

In un circuito alimentato da due pompe in parallelo, valvola utilizzata per mandare a scarico la pompa di maggior portata al raggiungimento di un determinato valore di taratura. Da questo momento in poi l'attuatore lavora con la pompa di minor portata a pressione maggiore, consumando meno energia. È stata studiata appositamente per la flangiatura diretta all'elettrovalvola.

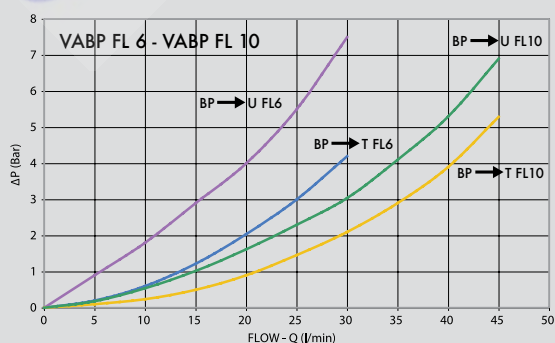
### MATERIALI E CARATTERISTICHE:

Corpo: acciaio brunito.  
Componenti interni: acciaio temprato termicamente e rettificato.  
Guarnizioni: BUNA N standard.  
Tenuta: a cono guidato. Trafilamento trascurabile.

### MONTAGGIO:

Fissare la valvola alla centralina collegando BP alla pompa di maggior portata, AP alla pompa di minor portata, T allo scarico e M all'eventuale manometro. Flangiare l'elettrovalvola alla VABP e collegare gli attacchi A e B all'attuatore.

### PERDITE DI CARICO PRESSURE DROP CURVE



### USE AND OPERATION:

In a circuit which is supplied by 2 parallel pumps, this valve unloads the larger pump to tank once the setting has been reached. From this point the actuator will only be supplied by the smaller pump at a higher pressure, therefore consuming less energy. It is designed for direct flange mounting onto solenoid valves.

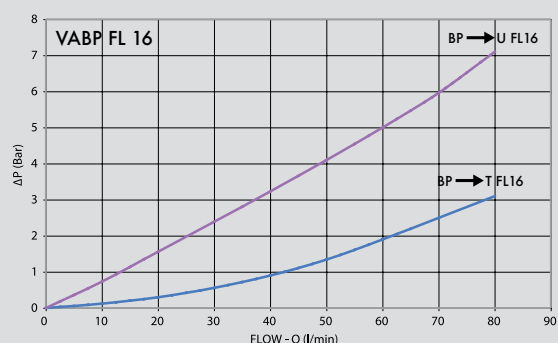
### MATERIALS AND FEATURES:

Body: burnished steel.  
Internal components: grounded and hardened steel.  
Seals: BUNA N standard.  
Leakage: Guided poppet - negligible leakage.

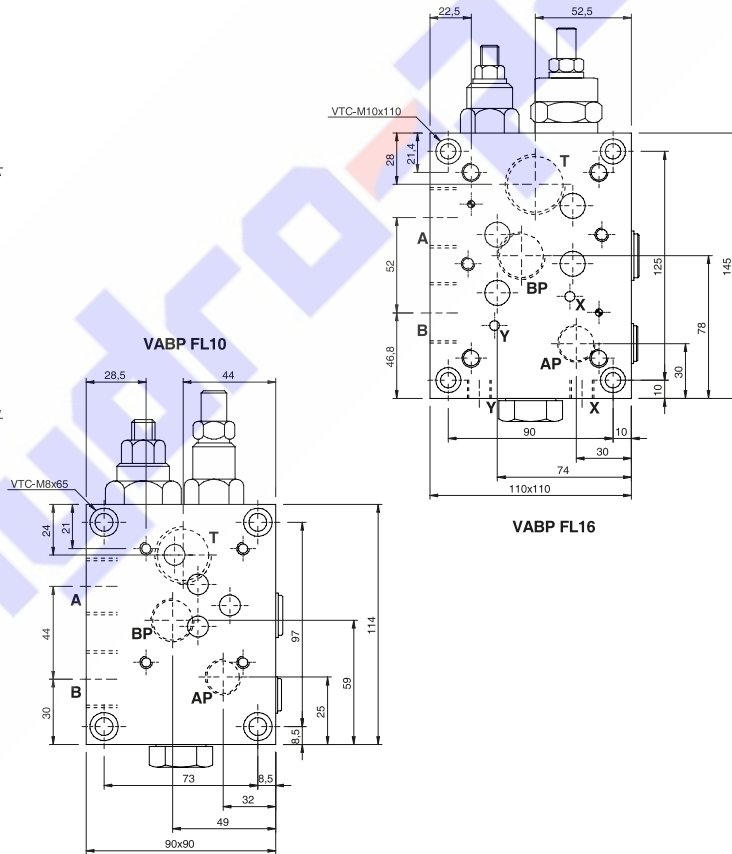
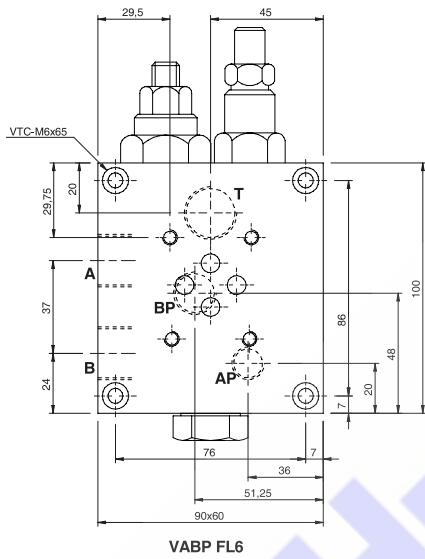
### CONNECTIONS:

Fit the valve to the power pack by connecting BP to the high flow pump, AP to the low flow pump, T to the tank and M to the eventual manometer. Flange the solenoid valve to the VABP and connect ports A and B to the actuator.

Temperatura olio: 50°C - Viscosità olio: 30 cSt  
Oil temperature: 50° C - Oil viscosity: 30 cSt



CODICE CODE	SIGLA TYPE	PORTATA MAX MAX FLOW Lt. / min			T	PRESSIONE MAX MAX PRESSURE Bar	BASSA PRESSIONE MAX LOW PRESSURE MAX Bar
		AP	BP				
<b>V0518</b>	VABP FL 6	20	40	60		350	100
<b>V0515</b>	VABP FL 10	30	50	80		350	100
<b>V0516</b>	VABP FL 16	40	100	120		350	110



CODICE CODE	SIGLA TYPE	A	B	T	AP	BP	PESO WIGHT kg
		GAS	GAS	GAS	GAS	GAS	
<b>V0518</b>	VABP FL 6	G 1/2"	G 1/2"	G 1/2"	G 1/4"	G 3/8"	3,854
<b>V0515</b>	VABP FL 10	G 3/4"	G 3/4"	G 3/4"	G 3/8"	G 1/2"	6,338
<b>V0516</b>	VABP FL 16	G 1"	G 1"	G 1"	G 1/2"	G 3/4"	11,928

**MOLLE - SPRINGS**

VALVOLA VALVE	BP (BAR)	AP (BAR)
VABP FL 6	20-80	50-350
VABP FL 10	20-80	50-350
VABP FL 16	20-80	50-350